

EndNote

● EndNote در لغت به معنای **نکته پایانی** است.

● پایگاهی جهت ذخیره و سازماندهی منابع

اصطلاحات رایج در EndNote

- **Citation**: به منابع استناد شده در متن مقاله گفته می‌شود.
- **Bibliography**: فهرست منابع که در پایان متن پژوهشی یا مقاله ذکر می‌شود.
- **Style**: سبکی که مجلات مختلف برای نوشتن منابع از آنها استفاده می‌کنند.

Getting Started with EndNote



Learn about EndNote

Learn about the new features in this version of EndNote, and browse the help file.

A guided tour is available in the EndNote manual and Getting Started Guide pdf files bundled with the program.



Create a new library

If you're ready to get started, your first step should be to create a new EndNote library.



Open an existing library

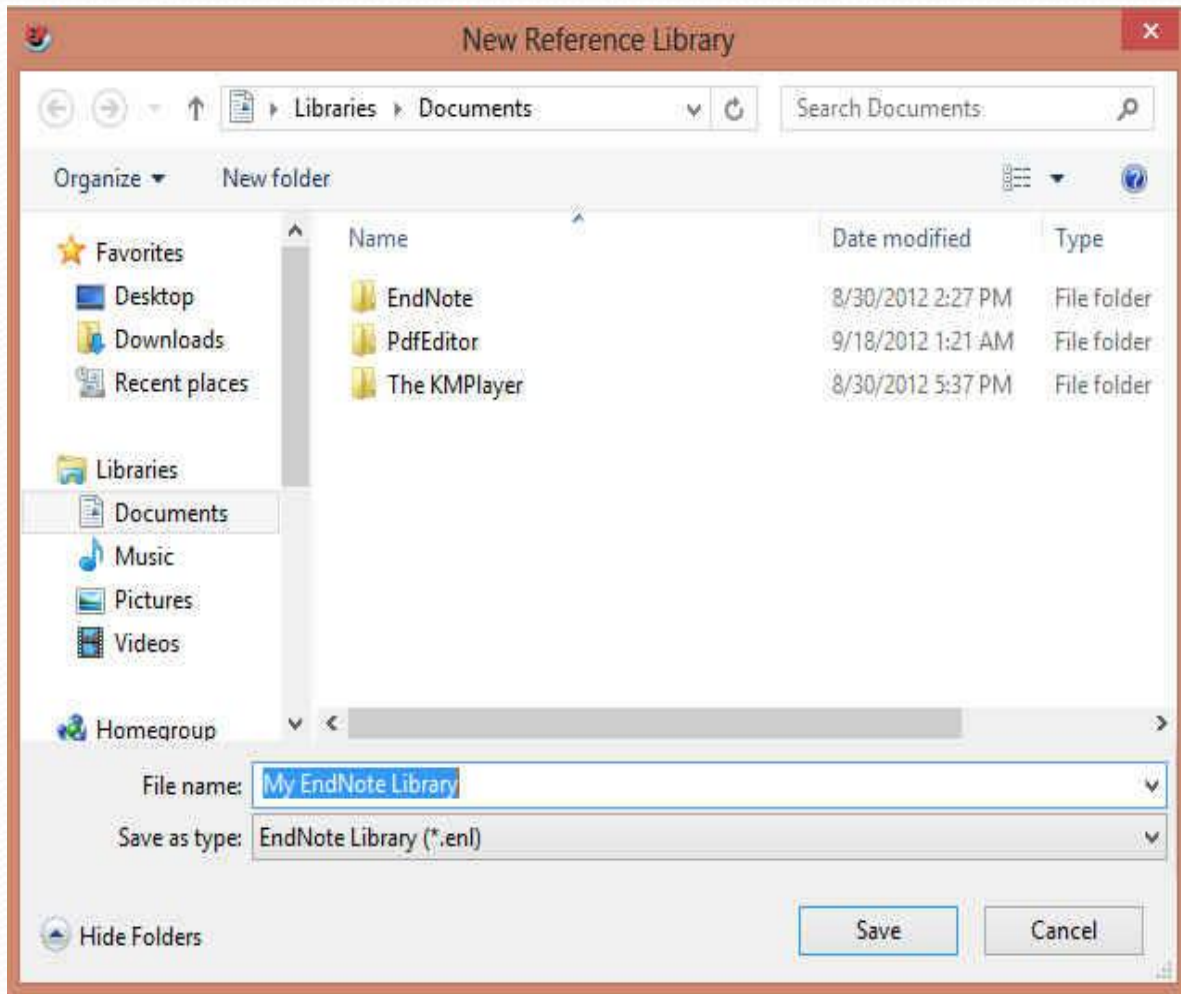
Open an existing EndNote library and get started immediately.

Close

• اگر برای اولین بار از این برنامه استفاده می‌کنید، پنجره زیر برای شما نمایش داده می‌شود.

• با انتخاب گزینه دوم می‌توانید یک Library جدید بسازید.

• در صورت داشتن Library قبلی، گزینه سوم را انتخاب نمایید.



- بعد از انتخاب گزینه دوم، در پنجره باز شده نام و محل ذخیره شدن Library خود را انتخاب نموده و بر روی دکمه SAVE کلیک کنید.

- شما همچنین می‌توانید برای ایجاد Library جدید از منوی File/ New واقع در نوار ابزار بالای برنامه EndNote هم استفاده نمایید.

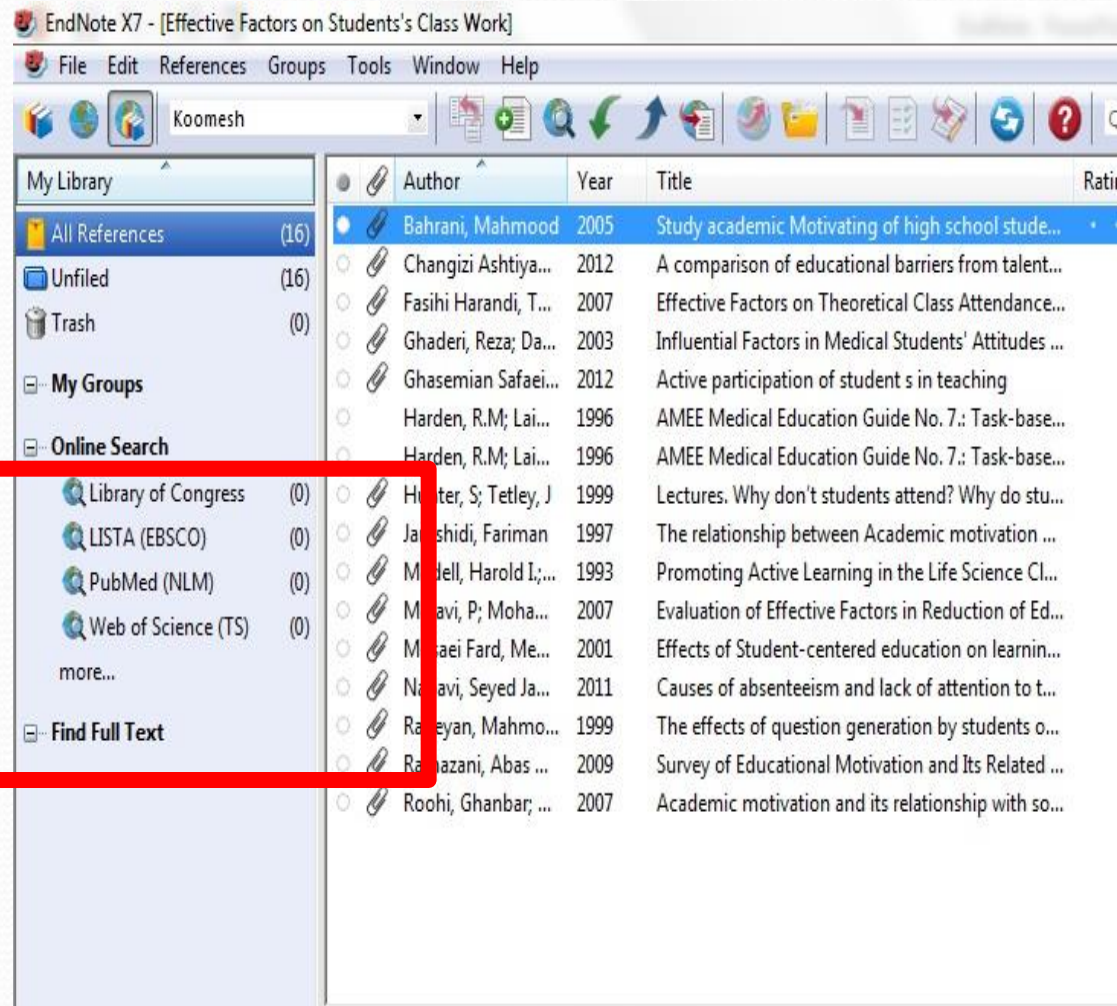
روش‌های ورود منابع به اندنوت

- وارد کردن مستقیم منابع از طریق برنامه EndNote
- وارد کردن منابع از طریق پایگاه‌های اطلاعاتی
- وارد کردن منابع از طریق Google Scholar
- تایپ دستی منابع
- وارد کردن منابع از طریق فایل PDF

روش اول: وارد کردن مستقیم منابع از طریق

EndNote

- در بخش Online Search فهرستی از پایگاه‌ها را مشاهده می‌نمایید. برای مشاهده کامل روی More کلیک کنید.
- برخی مقالات این پایگاه‌ها رایگان هستند که مهم‌ترین آنها PubMed (NLM) و Web of Science هستند.



http://www.ncbi.nlm.nih.gov/pubmed/?term=diabetes

diabetes - PubMed - NCBI

NCBI Resources How To Sign in to NCBI

PubMed.gov US National Library of Medicine National Institutes of Health

PubMed diabetes Search

RSS Save search Advanced Help

Show additional filters

Display Settings: Summary, 20 per page, Sorted by Recently Added Send to: Filters: Manage Filters

Article types

- Clinical Trial
- Review
- More ...

Text availability

- Abstract available
- Free full text available
- Full text available

Publication dates

- 5 years
- 10 years
- Custom range...

Species

- Humans

Results: 1 to 20 of 431177 Selected: 4

1. [Long term outcomes of aortic root replacement](#)
Bang JH, Im YM, Kim JB, Choo SJ, Chung CH
Korean J Thorac Cardiovasc Surg. 2013 Apr;46(2):104-110. doi: 10.5090/kjtcs.2013.46.2.104. Epub 2013 Apr 9. PMID: 23614095 [PubMed - in process]

2. [Deletion of aldose reductase from mice inhibits](#)
[capillary degeneration and superoxide generation](#)
Tang J, Du Y, Petrash JM, Sheibani N, Kern TS.
PLoS One. 2013 Apr 16;8(4):e62081. doi: 10.1371/journal.pone.0062081. Print 2013. PMID: 23614016 [PubMed - in process]

3. [Co-Culture of Neural Crest Stem Cells \(NCSC\) and Insulin Producing Beta-TC6 Cells Results in Cadherin Junctions and Protection against Cytokine-Induced Beta-Cell Death.](#)

Choose Destination

- File
- Collections
- Order
- Citation manager
- Clipboard
- E-mail
- My Bibliography

Generate a file for use with external citation management software.

Download 4 citations.

Create File

Download CSV

gestational diabetes

diabetes type 2

diabetes insipidus

Titles with your search

100%

روش دوم: وارد کردن منابع از طریق پایگاه های اطلاعاتی

PubMed

- My Library
- All References (40)
 - Unfiled (0)
 - Trash (0)
- My Groups
- Online Search
- Library of Congr... (0)
 - LISTA (EBSCO) (0)
 - PubMed (NLM) (0)
 - Web of Science ... (0)
- more...

- EndNote Web transfer...
- Find Full Text

- Author
- Frohman
- Vischer,
- Vischer,
- Vischer,
- Vischer,
- Vischer,
- Towbin,
- Surhone
- Sorensen
- Sharafat
- Sai, E.; S
- Saadatn

Preview Search

[1] Frohman
2;354(9):94

Choose An Import Filter

Name	Information Provider
PsycINFO (DS)	DataStar
PsycINFO (EBSCO)	EBSCO
PsycINFO (OCLC)	OCLC
PsycINFO (OvidSP)	OvidSP
PSYINDEXplus Lit AV (OvidSP)	OvidSP
PSYINDEXplus Tests (OvidSP)	OvidSP
PubMed (NLM)	National Library of Medicine
PubMed Central (NLM)	National Library of Medicine
QPAT	Questel
ReadersGuideAbs (OCLC)	OCLC
ReferBibIX	Generic
Reference Update (TS)	Thomson Reuters
Reference Update (TS)	Thomson Reuters
Reference Update (TS)	Thomson Reuters

Quick Search Find by

Less Info:

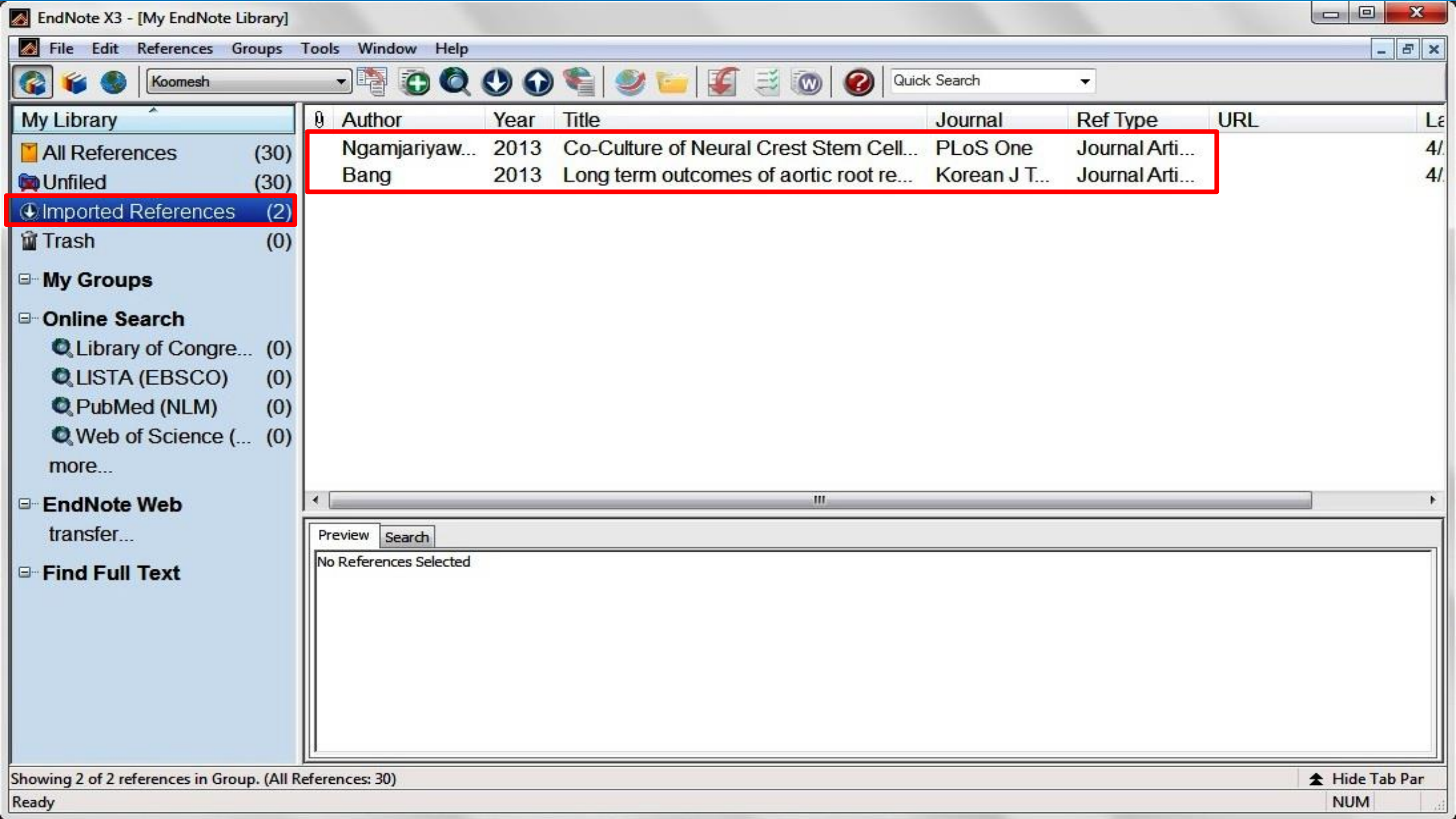
File Name: PubMed (NLM).enf
 Created: Thursday, April 25, 2013, 4:19:41 PM
 Modified: Tuesday, February 15, 2011, 4:44:44 PM
 Based On:
 Category: National Library of Medicine

Comments:
 1. Go to the PubMed website in your web

Showing 493 of 493 import filters.

Ref Type	URL
Med Journal Arti...	http://www.ncbi.nlm...
&... Journal Arti...	http://www.science...
&... Journal Arti...	http://www.science...
&... Journal Arti...	http://www.science...
&... Journal Arti...	http://www.science...
&... Journal Arti...	http://www.science...
on ... Journal Arti...	http://www.ncbi.nlm...
Book	http://books.google.
N... Journal Arti...	http://www.ncbi.nlm...
Journal Arti...	http://www.zjrms.ir/...
Journal Arti...	
eu... Journal Arti...	http://www.ncbi.nlm...

pathogenesis. N Engl J Med. 2006 Mar



- My Library
- All References (30)
- Unfiled (30)
- Imported References (2)
- Trash (0)
- My Groups
- Online Search
 - Library of Congre... (0)
 - LISTA (EBSCO) (0)
 - PubMed (NLM) (0)
 - Web of Science (... (0)
 - more...
- EndNote Web transfer...
- Find Full Text

Author	Year	Title	Journal	Ref Type	URL
Ngamjariyaw...	2013	Co-Culture of Neural Crest Stem Cell...	PLoS One	Journal Arti...	4/
Bang	2013	Long term outcomes of aortic root re...	Korean J T...	Journal Arti...	4/

Preview Search

No References Selected

http://www.ncbi.nlm.nih.gov/pubmed/?term=diabetes

diabetes - PubMed - NCBI

NCBI Resources How To Sign in to NCBI

PubMed.gov US National Library of Medicine National Institutes of Health

PubMed diabetes Search

RSS Save search Advanced Help

Show additional filters

Display Settings: Summary, 20 per page, Sorted by Recently Added Send to: Filters: Manage Filters

Article types

- Clinical Trial
- Review
- More ...

Text availability

- Abstract available
- Free full text available
- Full text available

Publication dates

- 5 years
- 10 years
- Custom range...

Species

- Humans

Results: 1 to 20 of 431177 Selected: 4

1. [Long term outcomes of aortic root replacement](#)
Bang JH, Im YM, Kim JB, Choo SJ, Chung CH
Korean J Thorac Cardiovasc Surg. 2013 Apr;46(2):104-110. doi: 10.5090/kjtcs.2013.46.2.104. Epub 2013 Apr 9.
PMID: 23614095 [PubMed - in process]

2. [Deletion of aldose reductase from mice inhibits](#)
[capillary degeneration and superoxide generation](#)
Tang J, Du Y, Petrash JM, Sheibani N, Kern T
PLoS One. 2013 Apr 16;8(4):e62081. doi: 10.1371/journal.pone.0062081. Epub 2013 Apr 16.
PMID: 23614016 [PubMed - in process]

3. [Co-Culture of Neural Crest Stem Cells \(NCSC\) and Insulin Producing Beta-TC6 Cells Results in Cadherin Junctions and Protection against Cytokine-Induced Beta-Cell Death.](#)

diabetes type 2

diabetes insipidus

Titles with your search

100%

Choose Destination

- File
- Clipboard
- Collections
- E-mail
- Order
- My Bibliography
- Citation manager

Download 4 items.

Format

MEDLINE

Sort by

Recently Added

Create File

روش دوم: وارد کردن منابع از طریق پایگاه های اطلاعاتی

PubMed

New...
 Open
 Close Library Ctrl+W
 Save Ctrl+S
 Save As...
 Save a Copy...
 Revert
 Export...
 Import
 Print... Ctrl+P
 Print Preview
 Print Setup...
 Compressed Library (.enx) ...
 Exit Ctrl+Q

	Year	Title	Journal	Ref Type	URL
n, E. ...	2006	Multiple sclerosis--the plaque and its ...	N Engl J Med	Journal Arti...	http://www.ncbi.nlm...
U. ...	2009	A call to incorporate the prevention a...	Diabetes &...	Journal Arti...	http://www.science...
U. ...	2009	A call to incorporate the prevention a...	Diabetes &...	Journal Arti...	http://www.science...
U. ...	2009	A call to incorporate the prevention a...	Diabetes &...	Journal Arti...	http://www.science...
U. ...	2009	A call to incorporate the prevention a...	Diabetes &...	Journal Arti...	http://www.science...
		whole blood immunoassay for the i...	J Interferon ...	Journal Arti...	http://www.ncbi.nlm...
		eciGen		Book	http://books.google...
en, P....	2008	Neutralizing antibodies against interf...	Ther Adv N...	Journal Arti...	http://www.ncbi.nlm...
ddin...	2011	Combination therapy of Avonex and ...	2	Journal Arti...	http://www.zjrms.ir/...
Shi...	2013	Association between Myocardial Trig...	PLoS One	Journal Arti...	
nia, ...	2007	Multiple sclerosis in Isfahan, Iran	Int Rev Neu...	Journal Arti...	http://www.ncbi.nlm...

transfer...

Find Full Text

Preview Search PDF & Quick Edit

[1] Frohman EM, Racke MK, Raine CS. Multiple sclerosis--the plaque and its pathogenesis. N Engl J Med. 2006 Mar 2;354(9):942-55.

- My Library
 - All References (40)
 - Unfiled (40)
 - Trash (0)
- My Groups
- Online Search
 - Library of Congr... (0)
 - LISTA (EBSCO) (0)
 - PubMed (NLM) (0)
 - Web of Science ... (0)
- EndNote Web
- Find Full Text

Author	Year	Title	Journal	Ref Type	URL
Frohman, E. ...	2006	Multiple sclerosis—the plaque and its ...	N Engl J Med	Journal Arti...	http://www.ncbi.nlm...
Vischer, U. ...	2009	A call to incorporate the prevention a...	Diabetes &...	Journal Arti...	http://www.science...
Vischer, U. ...	2009	A call to incorporate the prevention a...	Diabetes &...	Journal Arti...	http://www.science...
Vischer, U. ...	2009	A call to incorporate the prevention a...	Diabetes &...	Journal Arti...	http://www.science...
Vischer, U. ...				Journal Arti...	http://www.science...
Vischer, U. ...				Journal Arti...	http://www.science...
Towbin, K. ...				Journal Arti...	http://www.ncbi.nlm...
Surhone, P. ...				Book	http://books.google...
Sorensen, K. ...				Journal Arti...	http://www.ncbi.nlm...
Sharafat, M. ...				Journal Arti...	http://www.zjrms.ir/...
Sai, E.; S. ...				Journal Arti...	
Saadatn...				Journal Arti...	http://www.ncbi.nlm...

Import File

Import File: Choose...

Import Option: EndNote Library

Duplicates: Import All

Text Translation: No Translation

Import Cancel

Preview Search

[1] Frohman EM, Racke MK, Raine CS. Multiple sclerosis—the plaque and its pathogenesis. N Engl J Med. 2006 Mar 2;354(9):942-55.

EndNote X5 - [My EndNote Library]

File Edit References Groups Tools Window Help

Koomesh Quick Search

My Library

- All References (40)
- Unfiled (40)
- Trash (0)
- My Groups
- Online Search
 - Library of Congr... (0)
 - LISTA (EBSCO) (0)
 - PubMed (NLM) (0)
 - Web of Science ... (0)
- EndNote Web transfer...
- Find Full Text

Author	Year	Title	Journal	Ref Type	URL
Frohman, E. ...	2006	Multiple sclerosis--the plaque and its ...	N Engl J Med	Journal Arti...	http://www.ncbi.nlm...
Vischer, U. ...	2009	A call to incorporate the prevention a...	Diabetes &...	Journal Arti...	http://www.science...
Vischer, U. ...	2009	A call to incorporate the prevention a...	Diabetes &...	Journal Arti...	http://www.science...
Vischer, U. ...	2009	A call to incorporate the prevention a...	Diabetes &...	Journal Arti...	http://www.science...
Vischer, U. ...	2009	A call to incorporate the prevention a...	Diabetes &...	Journal Arti...	http://www.science...
Vischer, U. ...	2009	A call to incorporate the prevention a...	Diabetes &...	Journal Arti...	http://www.science...
Towbin, K. ...	2009	Journal Arti...	http://www.ncbi.nlm...
Surhone, P. ...	2009	Book	http://books.google...
Sorense, L. ...	2009	Journal Arti...	http://www.ncbi.nlm...
Sharafad, S. ...	2009	Journal Arti...	http://www.zjrms.ir/...
Sai, E.; S. ...	2009	Journal Arti...	...
Saadatn, S. ...	2009	Journal Arti...	http://www.ncbi.nlm...

Import File

Import File: pubmed_result.txt Choose...

Import Option: EndNote Library

- PDF
- EndNote Library
- EndNote Import
- Refer/BibIX
- Tab Delimited
- Reference Manager (RIS)
- ISI-CE
- Multi-Filter (Special)
- EndNote generated XML
- Other Filters...**
- ABC-CLIO
- PubMed (NLM)
- Use Connection File...

[1] Frohman EM, Racke MK, Raines EW, et al. Pathogenesis of multiple sclerosis. N Engl J Med. 2006 Mar 2;354(9):942-55.

Showing 40 of 40 references. Hide Tab Par

- Library
- References (40)
- Unfiled (0)
- Trash (0)
- Groups
- Online Search
- Library of Congr... (0)
- LISTA (EBSCO) (0)
- PubMed (NLM) (0)
- Web of Science ... (0)
- more...

- Author
- Frohman
- Vischer,
- Vischer,
- Vischer,
- Vischer,
- Vischer,
- Towbin,
- Surhone
- Sorensen
- Sharafat
- Sai, E.; S
- Saadatn

Preview Search

[1] Frohman
2;354(9):94

Choose An Import Filter

Name	Information Provider
PsycINFO (DS)	DataStar
PsycINFO (EBSCO)	EBSCO
PsycINFO (OCLC)	OCLC
PsycINFO (OvidSP)	OvidSP
PSYINDEXplus Lit AV (OvidSP)	OvidSP
PSYINDEXplus Tests (OvidSP)	OvidSP
PubMed (NLM)	National Library of Medicine
PubMed Central (NLM)	National Library of Medicine
QPAT	Questel
ReadersGuideAbs (OCLC)	OCLC
ReferBibIX	Generic
Reference Update (TS)	Thomson Reuters
RefMan DTC	Generic

Quick Search Find by

Less Info:

File Name: PubMed (NLM).enf
 Created: Thursday, April 25, 2013, 4:19:41 PM
 Modified: Tuesday, February 15, 2011, 4:44:44 PM
 Based On:
 Category: National Library of Medicine
 Comments: **DOWNLOAD INSTRUCTIONS**
 1. Go to the PubMed website in your web

Showing 493 of 493 import filters.

	Ref Type	URL
Med	Journal Arti...	http://www.ncbi.nlm...
&...	Journal Arti...	http://www.science...
&...	Journal Arti...	http://www.science...
&...	Journal Arti...	http://www.science...
&...	Journal Arti...	http://www.science...
&...	Journal Arti...	http://www.science...
on ...	Journal Arti...	http://www.ncbi.nlm...
	Book	http://books.google...
N...	Journal Arti...	http://www.ncbi.nlm...
	Journal Arti...	http://www.zjrms.ir/...
eu...	Journal Arti...	http://www.ncbi.nlm...

pathogenesis. N Engl J Med. 2006 Mar

http://www.sciencedirect.com/science?_ob=ArticleListURL&_method=list&_ArticleListID=-225923373&_sort=r&_st=13&view=c&_acct=C000228598&_version=1&_urlVersion=0&_userid=10&md5=6bfd9988842

ScienceDirect - Search Resu... X

SciVerse ScienceDirect

Hub | ScienceDirect | Scopus | Applications

Register | Login | Go to SciVal Suite

You have **Guest** access to ScienceDirect. Find out more...

Home | Publications | Search | My settings | My alerts | Shopping cart

All fields: diabetes Author: Journal/Book title: Volume: Issue: Page: Search

Advanced search Search tips

534,035 articles found for: ALL(diabetes) Save this search Save as search alert RSS Feed Font Size: A+ A-

Go to page: 1 of 21362 Go | Next >

Search within results: Search

Refine results: Limit to Exclude

Content Type: Journal (508,591) Book (31,844) Reference Work (3,533)

Journal/Book Title: The Lancet (17,462) Journal of the American College of Cardiology (12,892)

Export citations

Sort by: Relevance | Date

1 **A call to incorporate the prevention and treatment of geriatric disorders in the management of diabetes in the elderly** Review Article
Diabetes & Metabolism, Volume 35, Issue 3, June 2009, Pages 168-177
U.-M. Vischer, B. Bauduceau, I. Bourdel-Marchasson, J.-F. Blicke, T. Constans, A. Fagot-Campagna, E. Kaloustian, V. Lassman-Vague, P. Lecomte, D. Simon, D. Tessier, C. Verny, J. Doucet, For The Alfediam/SFGG French-speaking group for study of diabetes in the elderly
Show preview | Related articles | Related reference work articles Purchase \$31.50

2 **Diabetes Nutrition and Complications Trial: adherence to the ADA nutritional recommendations, targets of metabolic control, and onset of diabetes complications. A 7-year, prospective, population-based, observational multicenter study** Original Research Article
Journal of Diabetes and its Complications, Volume 20, Issue 6, November–December 2006, Pages 361-366
The Diabetes and Nutrition Study Group of the Spanish Diabetes Association (GSEDNu)
Show preview | Related articles | Related reference work articles Purchase \$31.50

3 **Report of the Committee on the classification and diagnostic criteria of diabetes mellitus**
Diabetes Research and Clinical Practice, Volume 55, Issue 1, January 2002, Pages 65-85
The Committee of the Japan Diabetes Society on the diagnostic criteria of diabetes mellitus, Takeshi Kuzuya, Shoichi

روش دوم: وارد کردن منابع از طریق پایگاه های اطلاعاتی

ScienceDirect

http://www.sciencedirect.com/science?_ob=DownloadURL&_method=confirm&searchtype=a&refSource=search&_st=13&co

ScienceDirect - Export Docu... x

SciVerse ScienceDirect

Hub | ScienceDirect | Scopus | Applications

Register | Login | Go to SciV

You have **Guest** access to ScienceDirect. Find out more..

Home | Publications | Search | My settings | My alerts | Shopping cart Help

All fields diabetes Author Journal/Book title Volume Issue Page Search

Export citations

To export the 2 selected citation + links, select your preferred formats and click Export.

Content format:

- Citations Only
- Citations and Abstracts

Export format:

- RIS format (for Reference Manager, ProCite, EndNote)
- RefWorks Direct Export ? About Refworks
- Plain text format
- BibTeX format

Export | Cancel

100%

روش دوم: وارد کردن منابع از طریق پایگاه های اطلاعاتی

ScienceDirect

All Databases

Results Topic=(diabetes)
Timespan=All Years.
Search language=English

Scientific WebPlus^{BETA} View Web Results >>

Results: **Approximately 935,221** [?]

Page 1 of 10,000 Go

Sort by: Publication Date -- newest to oldest

Save to: ENDNOTE[®] WEB | **ENDNOTE[®]** | I Wrote These Publications | more options

Citation Report feature not available. [?]

Refine Results

Search within results for

Databases

Research Domains

- SCIENCE TECHNOLOGY
- SOCIAL SCIENCES
- ARTS HUMANITIES

Research Areas

- ENDOCRINOLOGY METABOLISM
- BIOCHEMISTRY MOLECULAR BIOLOGY
- CARDIOVASCULAR SYSTEM CARDIOLOGY

- 1. Title: **Long-Term Renal Function Outcomes in Bladder Cancer After Radical Cystectomy**
Author(s): Osawa, Takahiro; Shinohara, Nobuo; Maruyama, Satoru; et al.
Source: UROLOGY JOURNAL Volume: 10 Issue: 1 Pages: 784-789 Published: WIN 2013
Times Cited: 0 (from All Databases)
[View abstract]
- 2. Title: **Periodontal disease as a potential risk factor for the development of diabetes in women with a prior history of gestational diabetes mellitus**
Author(s): Xiong, Xu; Elkind-Hirsch, Karen E.; Xie, Yiqiong; et al.
Source: JOURNAL OF PUBLIC HEALTH DENTISTRY Volume: 73 Issue: 1 Pages: 41-49 DOI: 10.1111/jphd.12004 Published: WIN 2013
Times Cited: 0 (from All Databases)
[Full Text] [View abstract]
- 3. Title: **The Role of Insulin-Like Growth Factor I and Hypoxia Inducible Factor Ia in Vascular Endothelial Growth Factor Expression in Type 2 Diabetes**
Author(s): Jiang, Fang; Tang, Yue-Ting; Guo, Li; et al.
Source: ANNALS OF CLINICAL AND LABORATORY SCIENCE Volume: 43 Issue: 1 Pages: 37-44 Published: WIN 2013
Times Cited: 0 (from All Databases)
[View abstract]

روش دوم: وارد کردن منابع از طریق پایگاه های اطلاعاتی

Web Of Knowledge

http://apps.webofknowledge.com/OutboundService.do?action=go

Web of Knowledge [5.9] - E... x

WEB OF KNOWLEDGESM | DISCOVERY STARTS HERE

THOMSON REUTERS

Log Out | Help

Processing Records

Please wait while your request is processed.
(Note: Depending on the number of records, this may take a few moments.)

Product: Web of Knowledge
Selected action: Export to Reference Software
Processing 2 records:
2...Done.

Export If the "Export" process does not start automatically, then click "Export."

Back to Results When you are done exporting the file, click "Back to Results. "

© 2012 Thomson Reuters | [Terms of Use](#) | [Privacy Policy](#) | *Please give us your feedback on using Web of Knowledge.*

Do you want to open or save savedrecs.ciw from ets.webofknowledge.com? Open Save Cancel x

100%

روش دوم: وارد کردن
منابع از طریق پایگاه
های اطلاعاتی

Web Of Knowledge

روش سوم: وارد کردن منابع از طریق Google Scholar

• در صفحه اصلی Google Scholar روی گزینه Setting کلیک کنید.

• در پایین گزینه تنظیمات و در قسمت

Bibliography Manager/ Show links to import citation into/ endnote

کرده و سپس بر روی دکمه Save کلیک کنید.

The screenshot shows the Google Scholar interface. At the top right, the user's email 'barev39@gmail.com' is displayed. Below it are navigation links for 'My Citations', 'Metrics', 'Alerts', and 'Settings' (which is highlighted with a red box). The Google Scholar logo is on the left. A search bar is in the center. Below the search bar, there are radio buttons for 'Articles (include patents)' (which is selected) and 'Legal documents'. The 'Bibliography manager' section is visible, with two radio button options: 'Don't show any citation import links.' and 'Show links to import citations into'. The second option is selected. A dropdown menu is open below it, listing 'BibTeX', 'EndNote' (highlighted with a red box), 'RefMan', and 'RefWorks'. At the bottom right, there are 'Save' and 'Cancel' buttons, with 'Save' highlighted in a red box. A footer note says 'To retain settings, you must turn on cookies'.

2 results (0.05 sec)

[The Effect of an Acute Aerobic Bout on Time Course Alterations of Visceral Adipose Tissue Expression in Diabetic Rats](#)

M Alinejad, R Fathi, V Minasiyan... - Iranian Journal of ..., 2012 - jm.um.ac.ir

... Diabetic Rats **Mohamad Alinejad** 1, Rozita Fathi1*, Vazgan Minasiyan 2, Elahe Talebi Garakani 1, Alireza Safarzade 1 1 ... or both. **Visfatin** is a recently discovered protein that is expressed and secreted in visceral fat tissue. Elevated ...

[Import into EndNote](#) [More](#)

[Acute-phase proteins and other systemic responses to inflammation](#)

FH Epstein, C Gabay, I Kushner - New England Journal of ..., 1999 - Mass Medical Soc

Review Article from The New England Journal of Medicine — Acute-Phase Proteins and Other Systemic Responses to Inflammation.

Cited by 3250 [Related articles](#) [BL Direct](#) [All 14 versions](#) [Import into EndNote](#) [More](#)

Create alert

[About Google Scholar](#)

[All About Google](#)

[Privacy & Terms](#)

[Give us feedback](#)

• در صفحه اصلی Google Scholar عنوان خود

را جستجو کنید. همانطور که در شکل می بینید به

هر یک از رکوردها، گزینه **Import to**

EndNote اضافه شده است.

• با کلیک کردن بر روی این لینک می توانید منبع

مورد نظر را ذخیره یا باز نمایید که در صورت

بازکردن، وارد برنامه می شود.

روش چهارم: تایپ دستی منابع

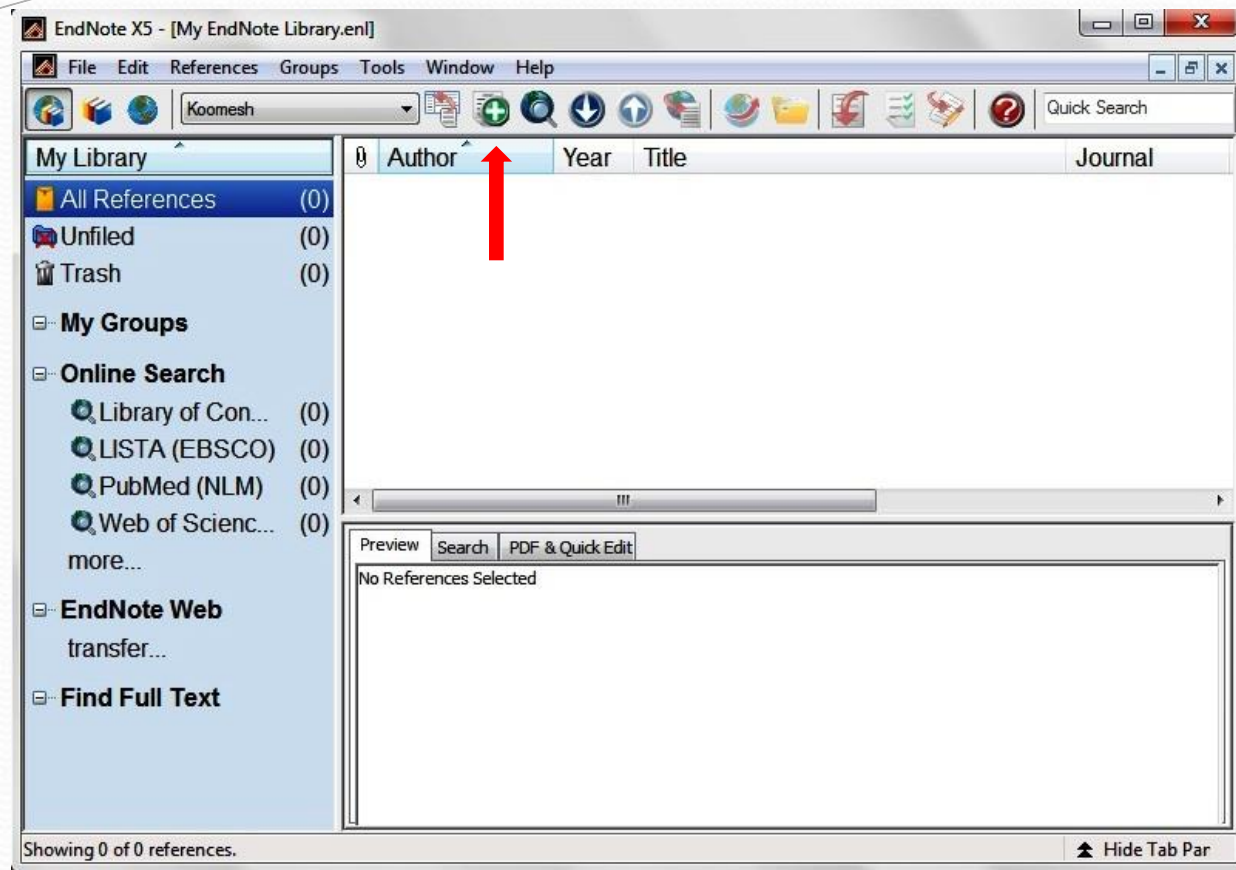
- بر روی علامت اضافه کردن منبع که در شکل نشان داده شده است کلیک نمایید.

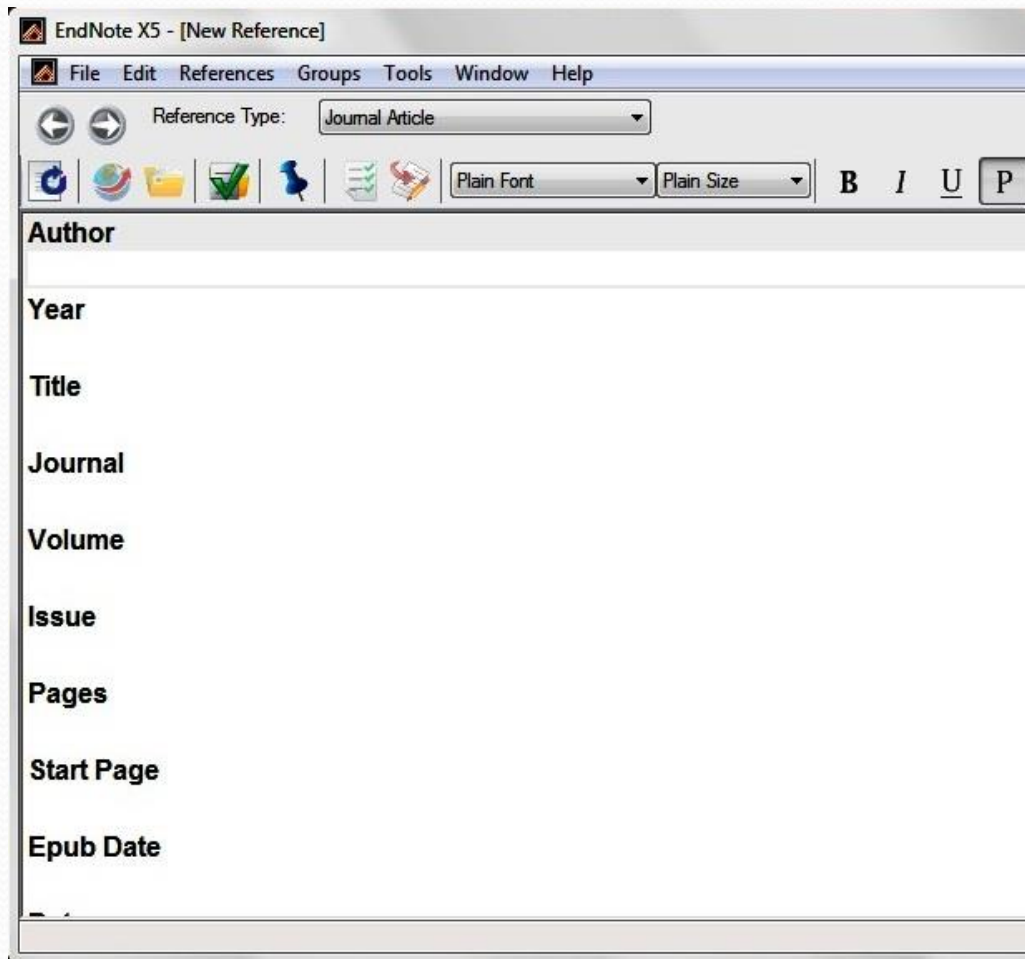
- با انتخاب گزینه‌های **References/ New**

reference از نوار منوی بالای صفحه نیز

می‌توانید وارد صفحه ورود دستی منابع

شوید.





- بخش‌های مختلف منابع باید به صورت دستی وارد شوند.

ابتدا باید در قسمت **Reference Type** نوع منبع خود را

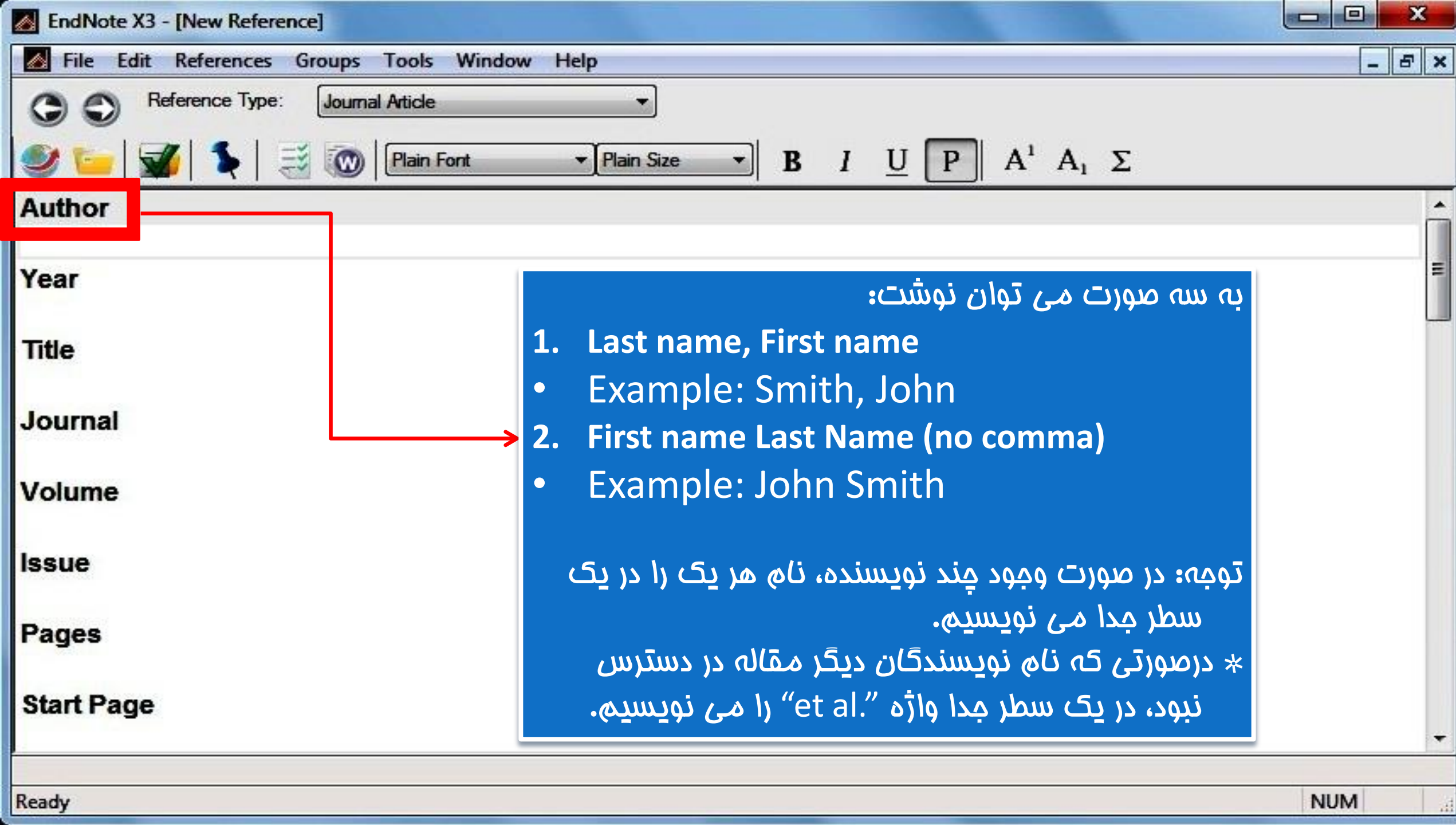
مشخص نمایید.

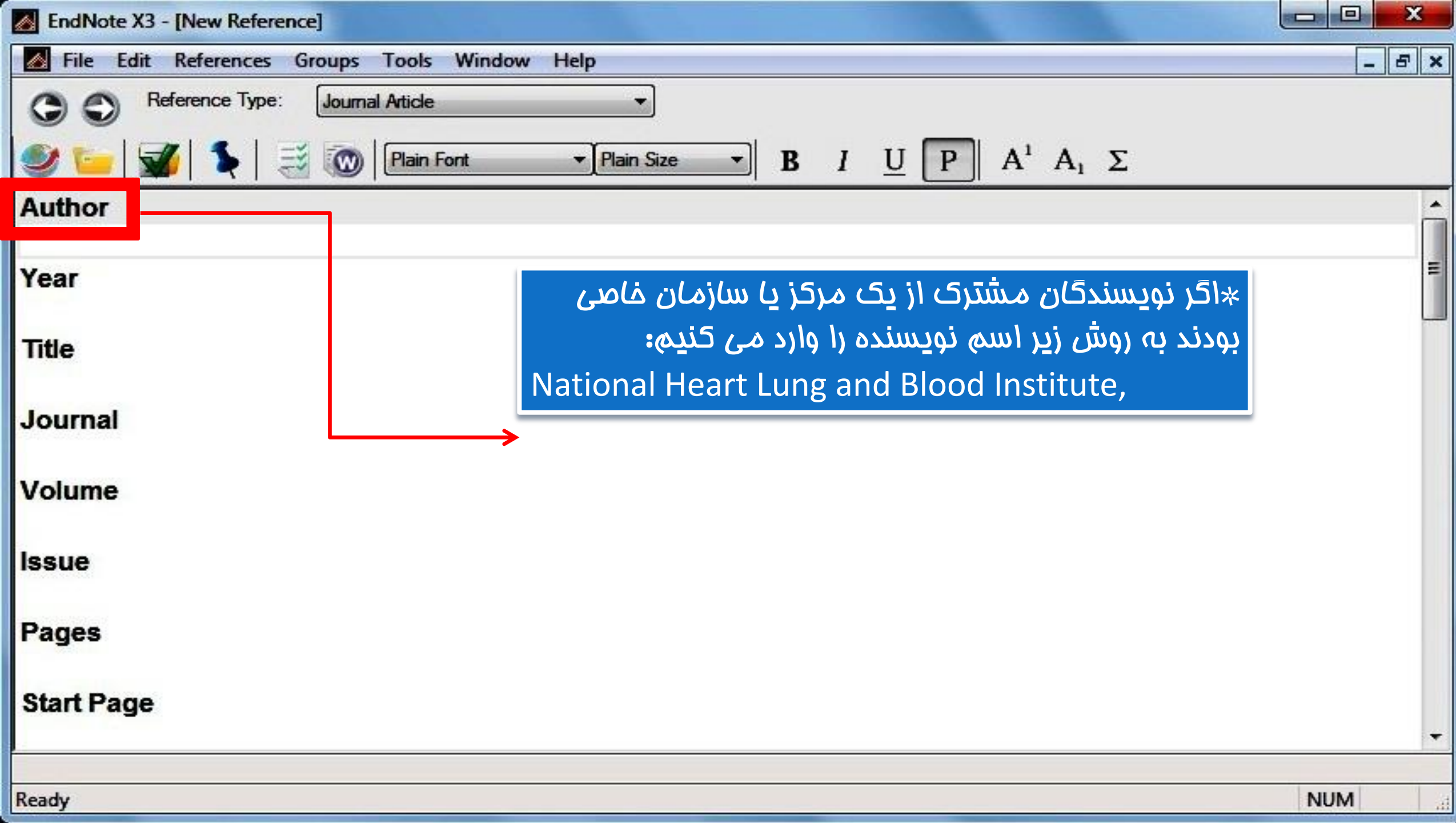
- برای اضافه کردن فایل کامل مقاله و یا فایل‌های تصویری ،

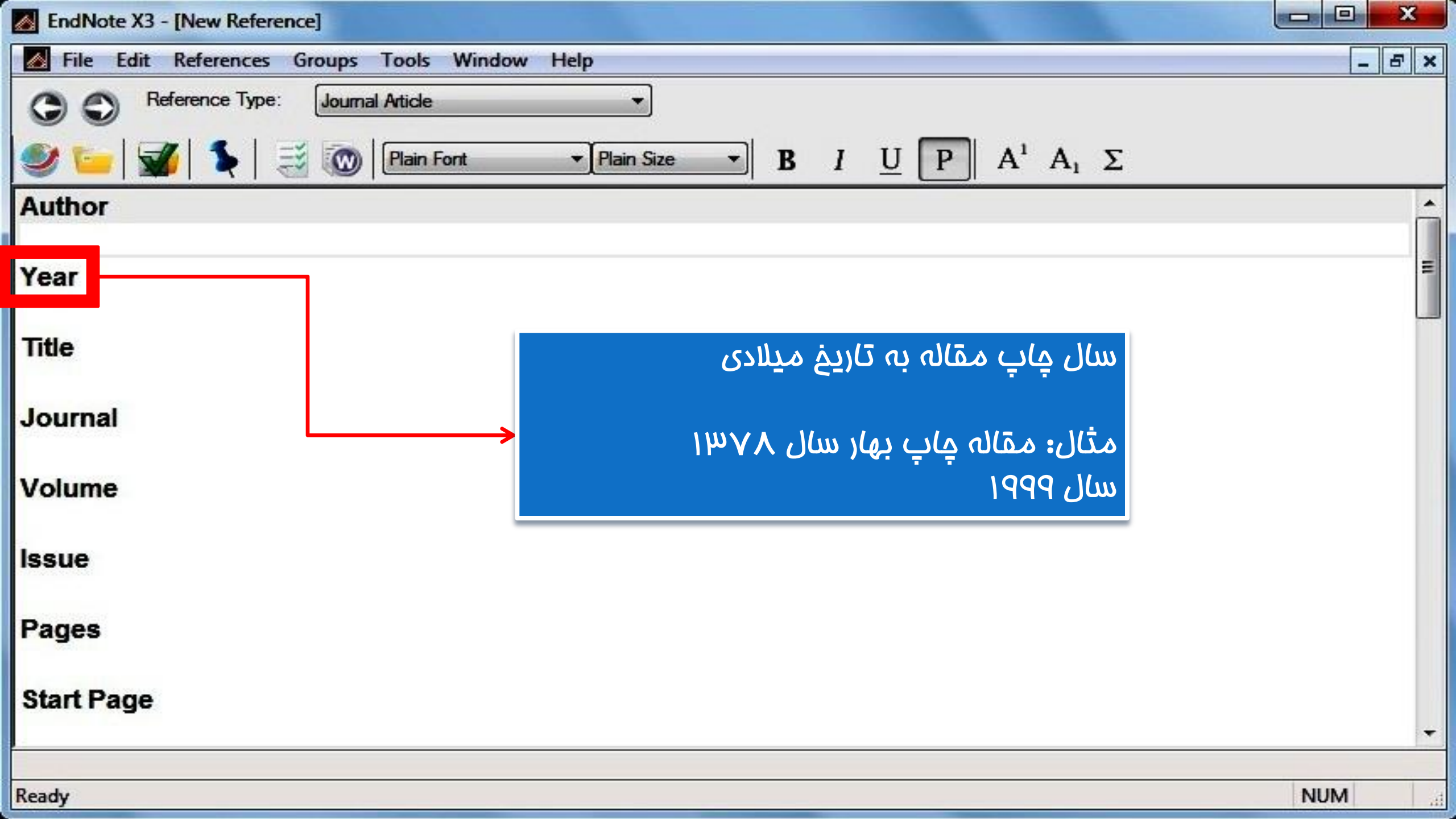
بر روی صفحه کلیک راست و گزینه **File**

Attachment/ Attach File و یا گزینه **Figure/**

Attach Figure انتخاب کنید.







Reference Type: Journal Article

Plain Font Plain Size B I U P A¹ A₁ Σ

Author

Year

Title

Journal

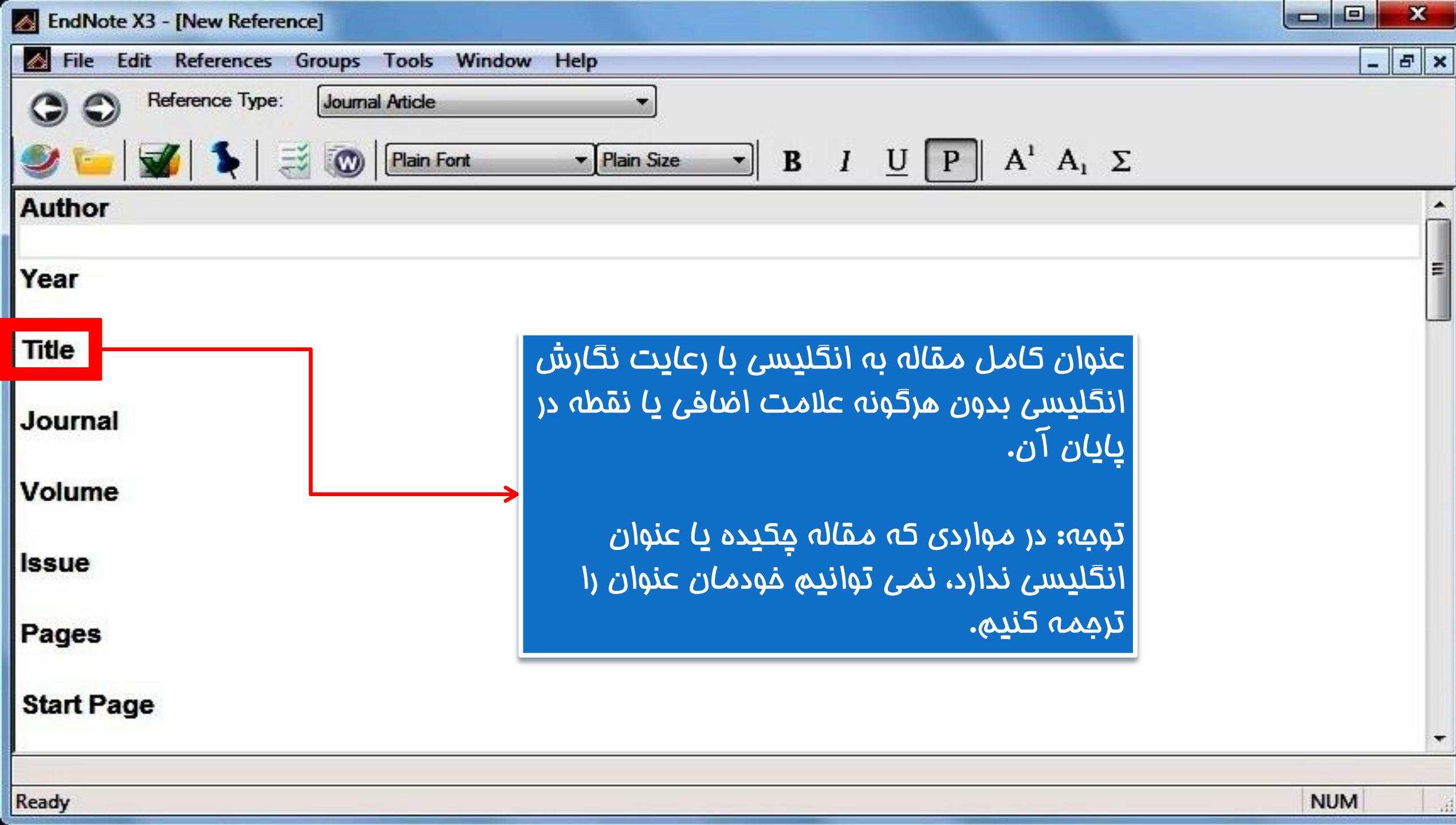
Volume

Issue

Pages

Start Page

سال چاپ مقاله به تاریخ میلادی
مثال: مقاله چاپ بهار سال ۱۳۷۸
سال ۱۹۹۹



Reference Type: Journal Article

Plain Font Plain Size **B** *I* U **P** A¹ A₁ Σ

Author

Year

Title

Journal

Volume

Issue

Pages

Start Page

نام کامل مجله ای که مقاله در آن به چاپ رسیده است.

با مراجعه به سایت مجلات می توان عنوان انگلیسی آنها را استخراج کرد.

Reference Type: Journal Article

Plain Font Plain Size **B** *I* U **P** A¹ A₁ Σ

Author

Year

Title

Journal

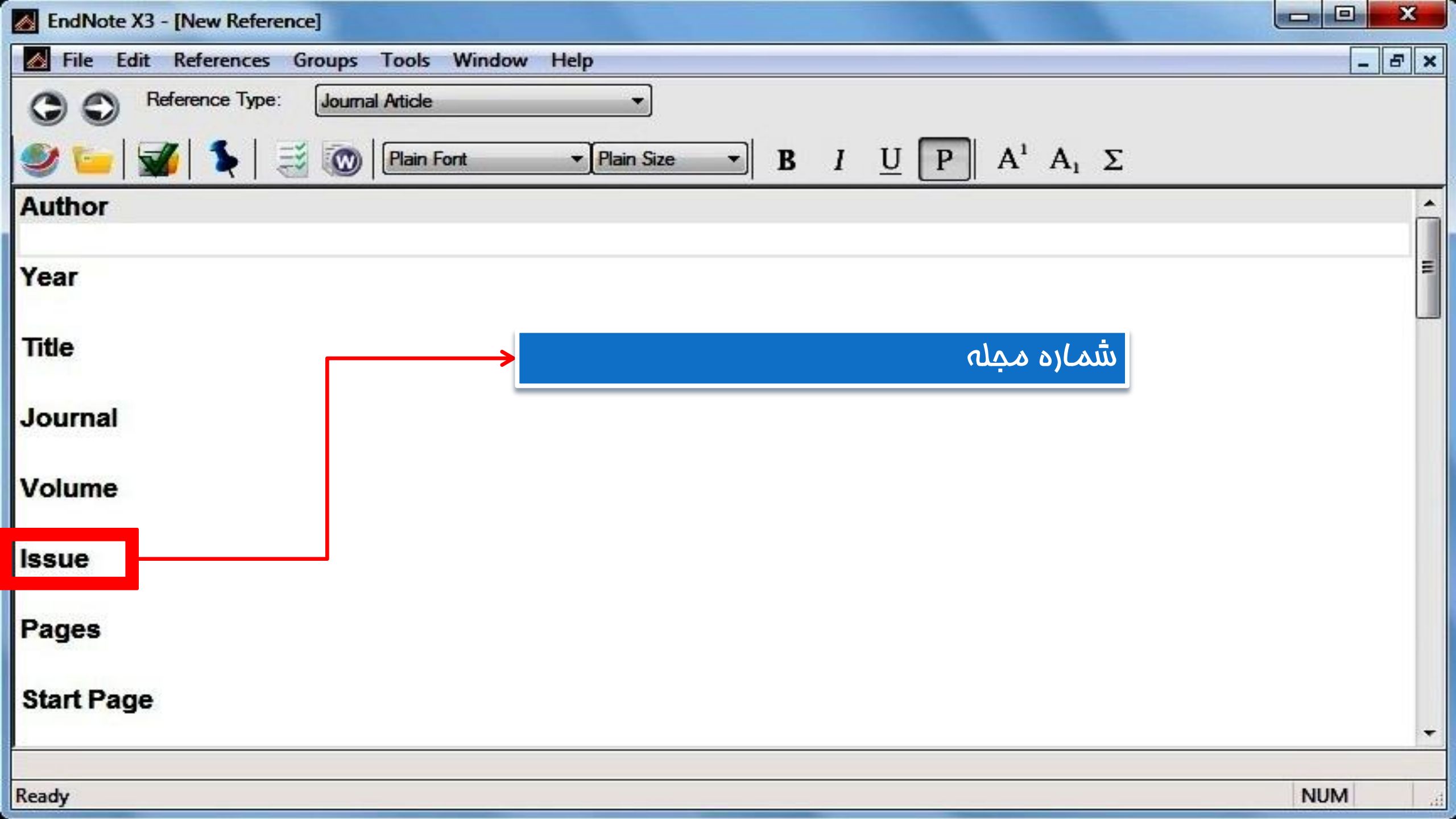
Volume

Issue

Pages

Start Page

دوره مجله



Reference Type: Journal Article

Plain Font Plain Size B I U P A¹ A₁ Σ

Author

Year

Title

Journal

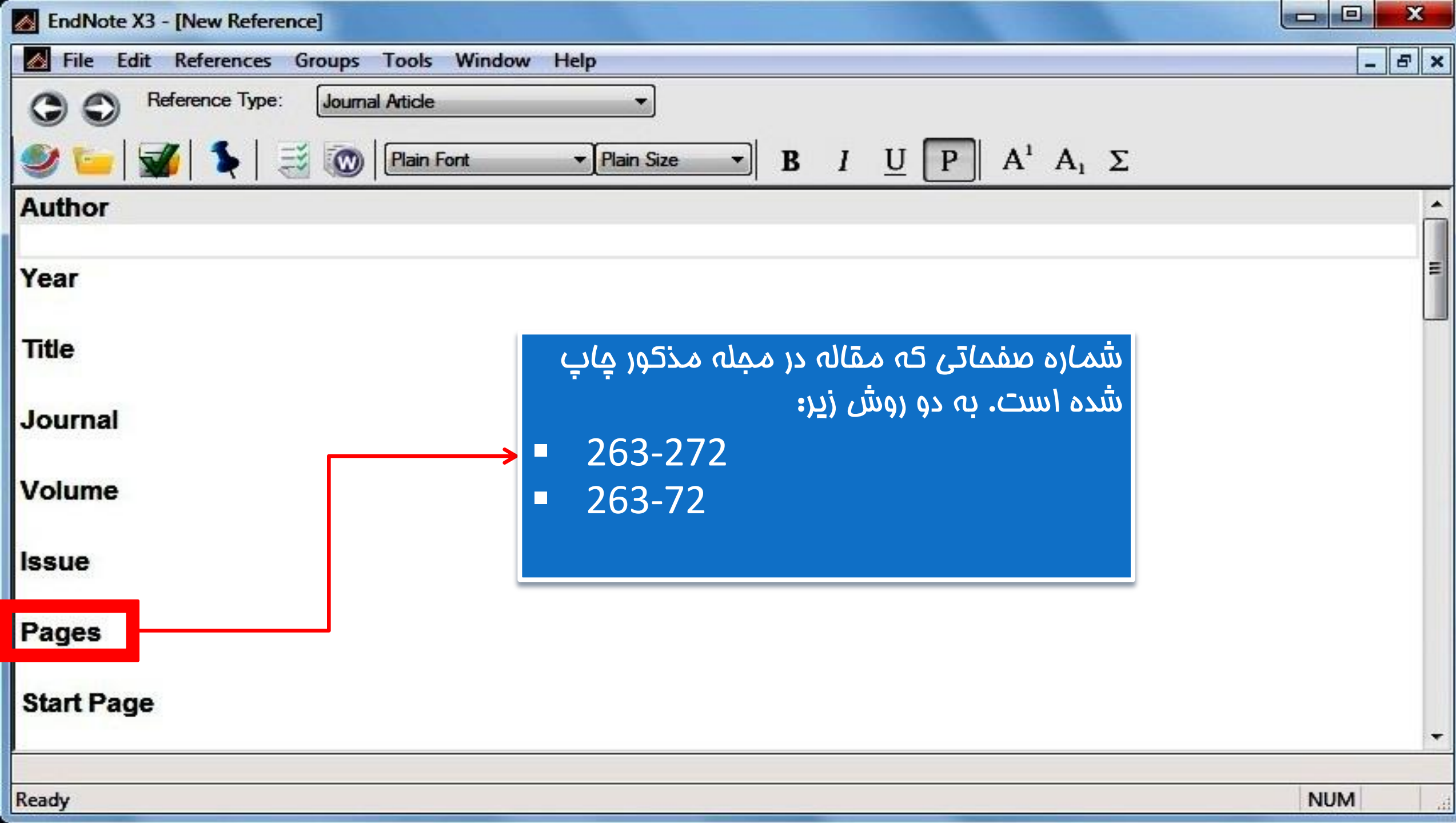
Volume

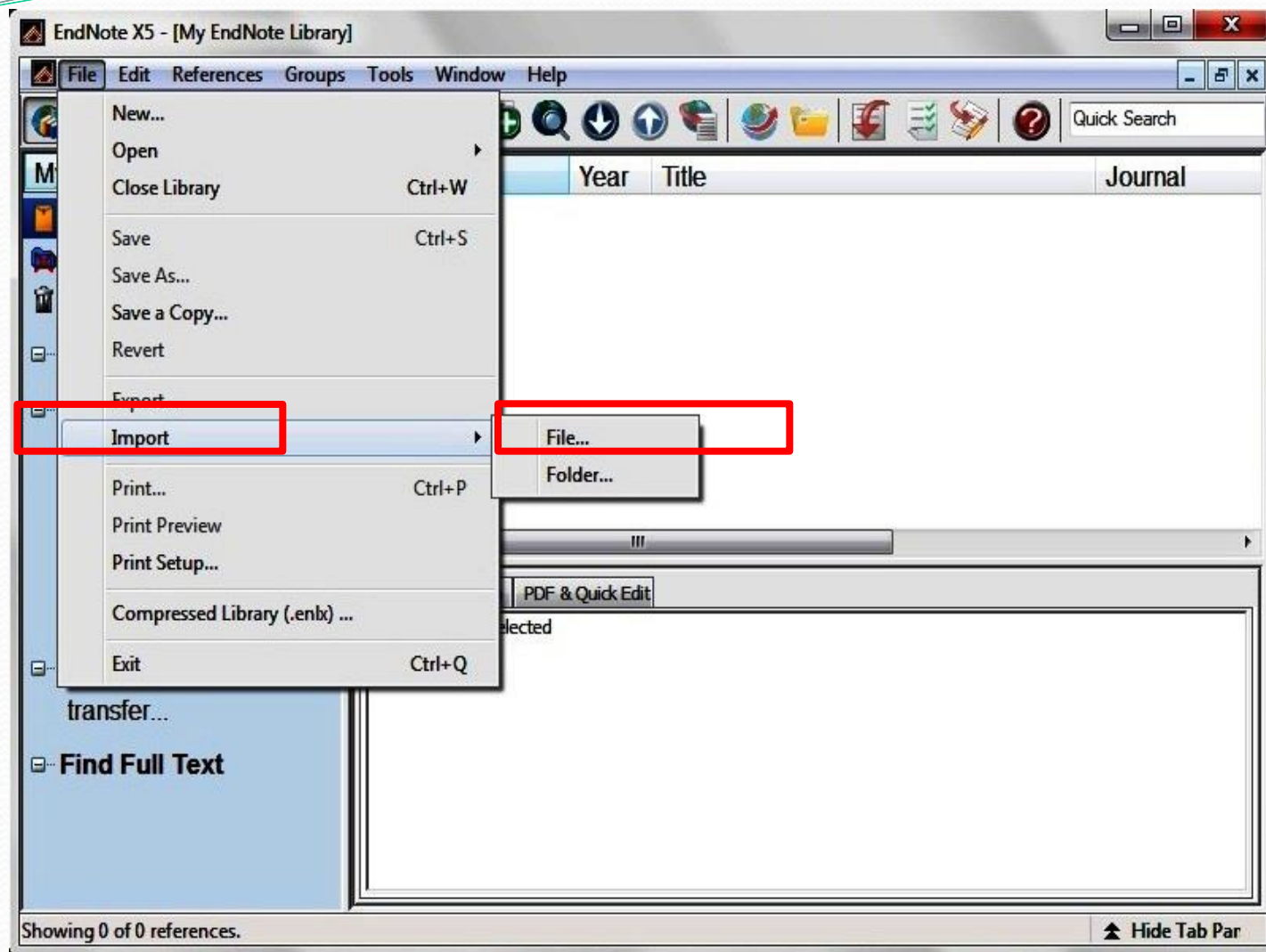
Issue

Pages

Start Page

شماره مجله





روش پنجم:

وارد کردن منابع از

طریق فایل PDF

- My Library
 - All References (0)
 - Unfiled (0)
 - Trash (0)
- My Groups
- Online Search
 - Library of Con... (0)
 - LISTA (EBSCO) (0)
 - PubMed (NLM) (0)
 - Web of Scienc... (0)
 - more...
- EndNote Web transfer...
- Find Full Text

Author	Year	Title	Journal	Ref Type	UF
--------	------	-------	---------	----------	----

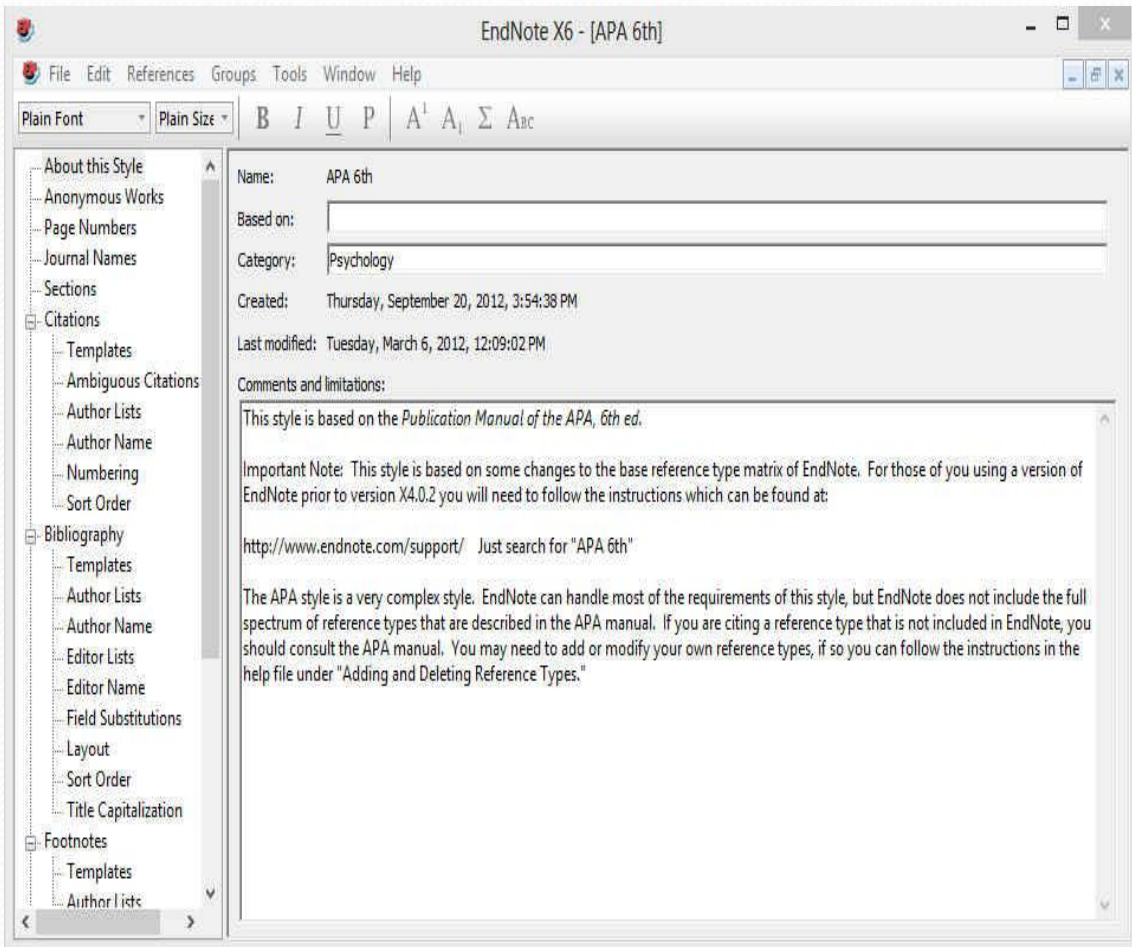
Import File

Import File:

Import Option:

- PDF
- EndNote Library
- EndNote Import
- Refer/BibIX
- Tab Delimited
- Reference Manager (RIS)
- ISI-CE
- Multi-Filter (Special)
- EndNote generated XML
- Other Filters...**
- ABC-CLIO
- PubMed (NLM)
- Use Connection File...**

ایجاد یا ویرایش Style

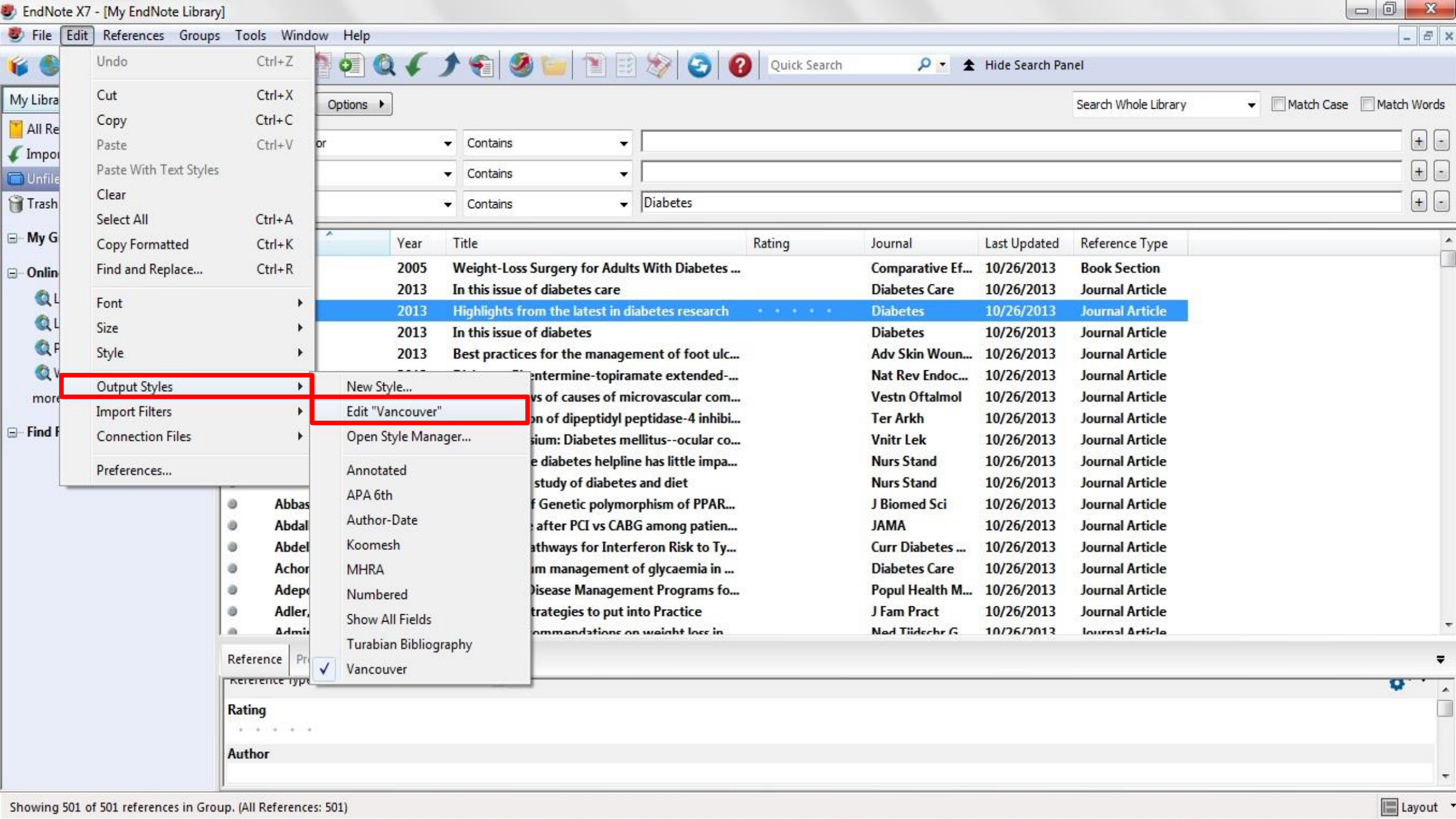


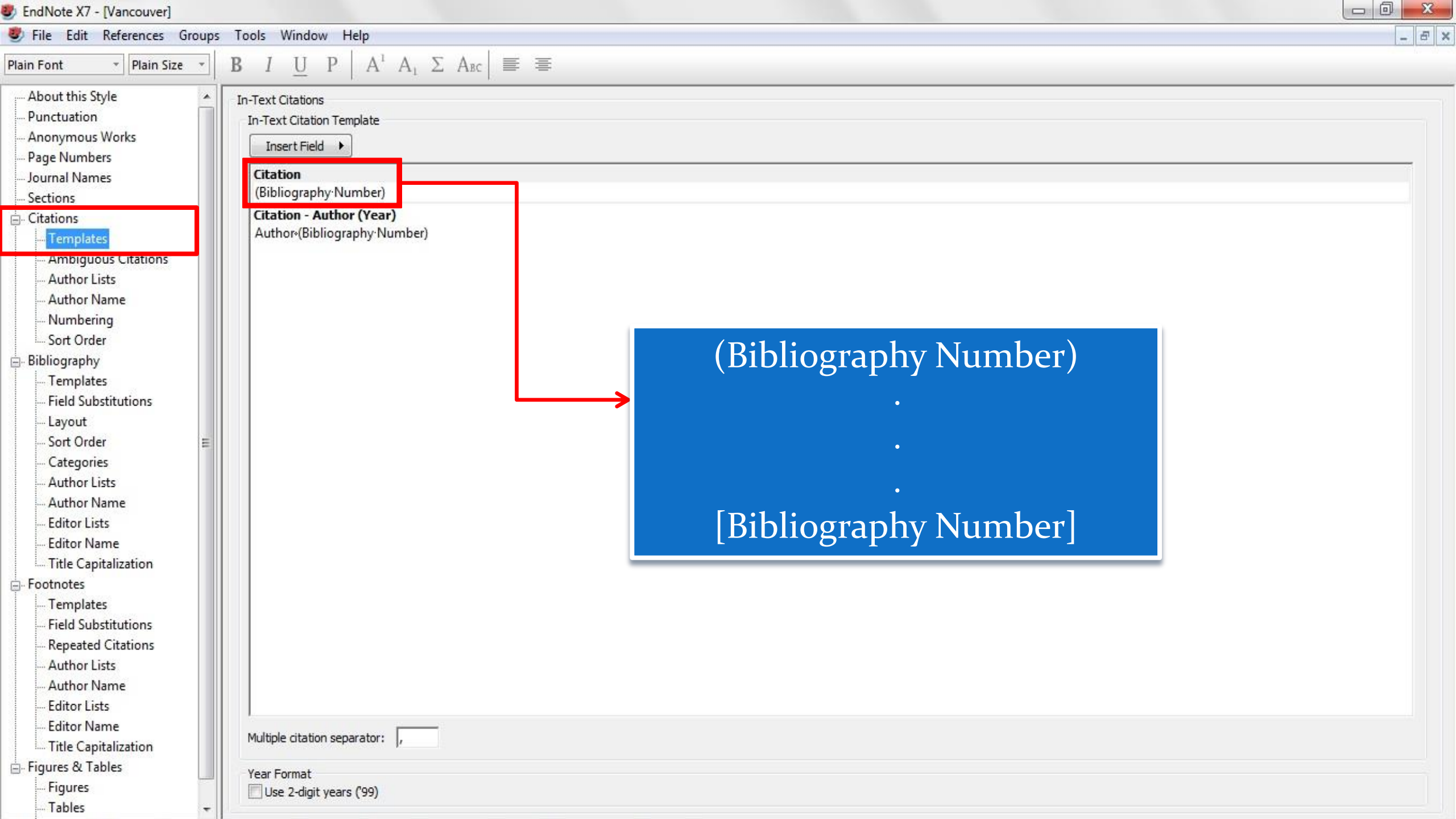
برای ایجاد Style جدید باید منوی Edit و سپس گزینه‌های New Style و Output Style را انتخاب نمایید. این کار به لحاظ زمانبر بودن و مشکلات همراه آن توصیه نمی‌شود و بهتر است که یکی از Style‌های موجود که با سبک مورد نظر مطابقت بیشتری دارد را انتخاب و ویرایش نمایید. برای این کار از منوی Edit، Output Style، Style مورد نظر خود را انتخاب و اقدام به ویرایش آن نمایید.

ویرایش Style

The screenshot shows the EndNote X7 interface. The title bar reads "EndNote X7 - [My EndNote Library]". The menu bar includes "File", "Edit", "References", "Groups", "Tools", "Window", and "Help". The toolbar contains various icons, and a dropdown menu is open showing "Vancouver" selected, which is highlighted with a red box. Below the toolbar, the "My Library" pane on the left shows "All References (501)", "Imported References (1)", "Unfiled (501)", and "Trash (0)". The "My Groups" and "Online Search" panes are also visible. The main search area has a "Search" button and "Options" dropdown. The search criteria are set to "Search Whole Library" with checkboxes for "Match Case" and "Match Words". The search criteria are: "Author" contains, "Year" contains, and "Title" contains "Diabetes". The search results table is displayed below:

Author	Year	Title	Rating	Journal
	2005	Weight-Loss Surgery for Adults With Diabetes ...		Comparative
	2013	In this issue of diabetes care		Diabetes Car
	2013	Highlights from the latest in diabetes research	• • • • •	Diabetes
	2013	In this issue of diabetes		Diabetes
	2013	Best practices for the management of foot ulc...		Adv Skin Wc
	2013	Diabetes: Phentermine-topiramate extended-...		Nat Rev End
	2013	[Modern views of causes of microvascular com...		Vestn Oftaln
	2013	[A combination of dipeptidyl peptidase-4 inhibi...		Ter Arkh
	2013	[13th Symposium: Diabetes mellitus--ocular co...		Vnitř Lek
	2013	Practice nurse diabetes helpline has little impa...		Nurs Stand





In-Text Citations

In-Text Citation Template

Insert Field ▾

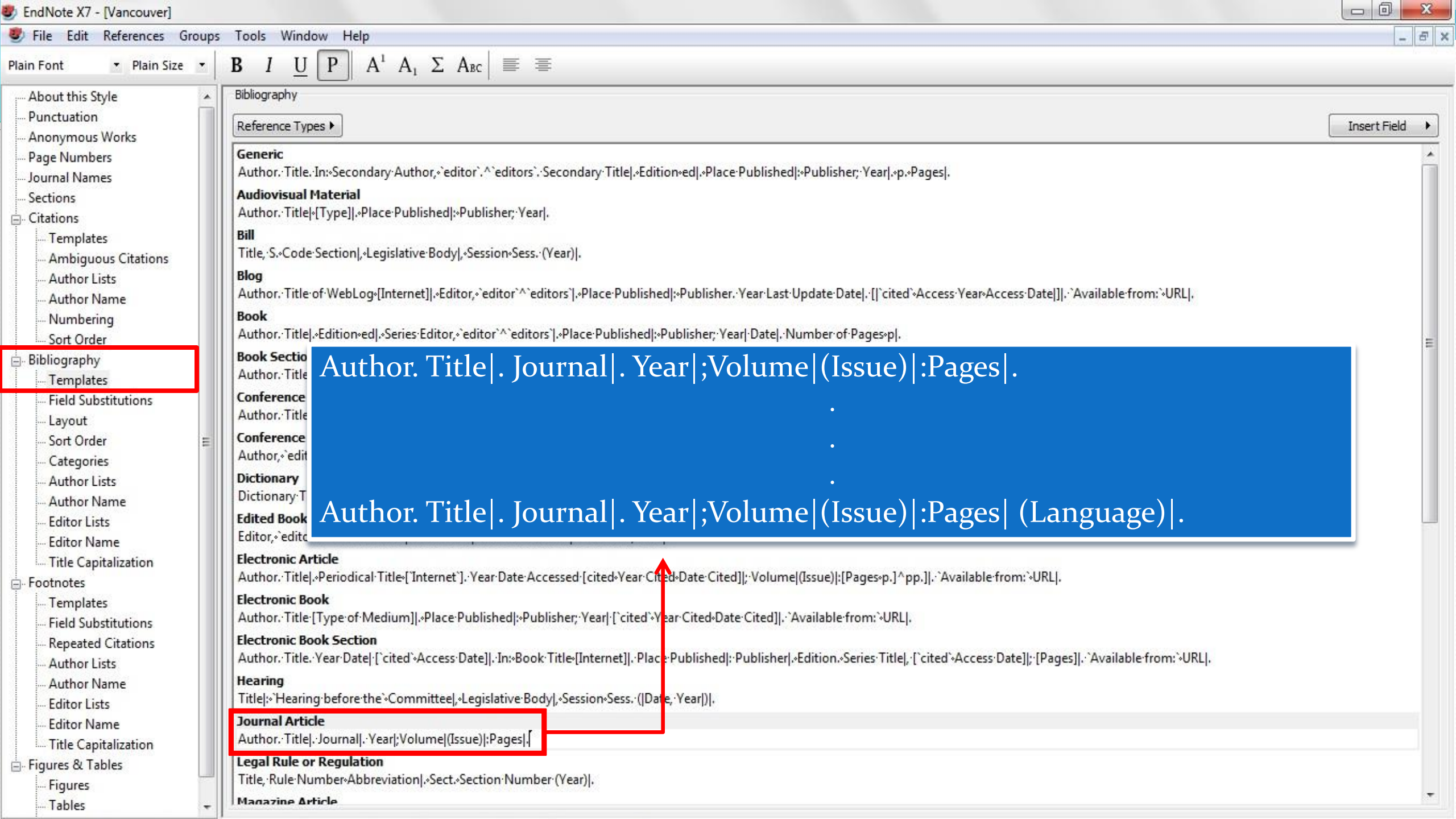
Citation
(Bibliography: Number)

Citation - Author (Year)
Author (Bibliography: Number)

(Bibliography Number)
.
.
.
[Bibliography Number]

Multiple citation separator: ,

Year Format
 Use 2-digit years ('99)



- About this Style
- Punctuation
- Anonymous Works
- Page Numbers
- Journal Names
- Sections
- Citations
 - Templates
 - Ambiguous Citations
 - Author Lists
 - Author Name
 - Numbering
 - Sort Order
- Bibliography**
 - Templates
 - Field Substitutions
 - Layout
 - Sort Order
 - Categories
 - Author Lists
 - Author Name
 - Editor Lists
 - Editor Name
 - Title Capitalization
- Footnotes
 - Templates
 - Field Substitutions
 - Repeated Citations
 - Author Lists
 - Author Name
 - Editor Lists
 - Editor Name
 - Title Capitalization
- Figures & Tables
 - Figures
 - Tables

Bibliography

Reference Types ▾

Insert Field ▸

Generic

Author. Title. In: Secondary Author, editor, editors. Secondary Title. Edition. Place Published: Publisher; Year. p. Pages.

Audiovisual Material

Author. Title [Type]. Place Published: Publisher; Year.

Bill

Title. S. Code Section. Legislative Body. Session Sess. (Year).

Blog

Author. Title of WebLog [Internet]. Editor, editors. Place Published: Publisher. Year Last Update Date. [cited Access Year Access Date]. Available from: URL.

Book

Author. Title. Edition. Series Editor, editors. Place Published: Publisher; Year | Date. Number of Pages p.

Book Section

Author. Title

Author. Title | . Journal | . Year ; Volume | (Issue) | : Pages | .

Conference

Author. Title

Conference

Author, editor

Dictionary

Dictionary Title

Edited Book

Editor, editors

Author. Title | . Journal | . Year ; Volume | (Issue) | : Pages | (Language) | .

Electronic Article

Author. Title. Periodical Title [Internet]. Year Date Accessed [cited Year Cited Date Cited]; Volume (Issue); [Pages p.] pp. Available from: URL.

Electronic Book

Author. Title [Type of Medium]. Place Published: Publisher; Year [cited Year Cited Date Cited]. Available from: URL.

Electronic Book Section

Author. Title. Year Date [cited Access Date]. In: Book Title [Internet]. Place Published: Publisher. Edition. Series Title, [cited Access Date]; [Pages]. Available from: URL.

Hearing

Title. Hearing before the Committee. Legislative Body. Session Sess. (Date, Year).

Journal Article

Author. Title. Journal. Year; Volume (Issue); Pages.

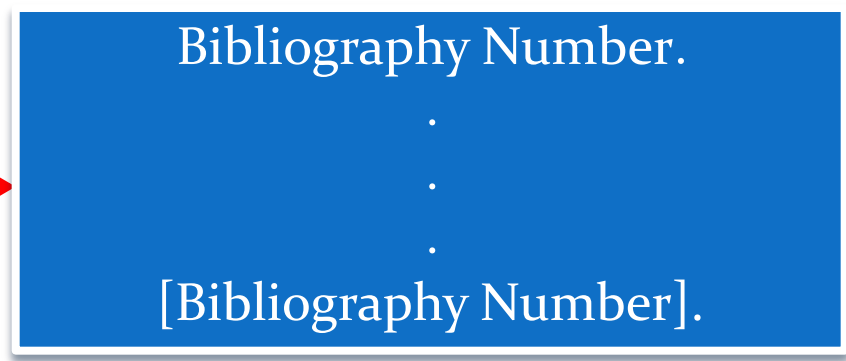
Legal Rule or Regulation

Title. Rule Number Abbreviation. Sect. Section Number (Year).

Magazine Article

- About this Style
- Punctuation
- Anonymous Works
- Page Numbers
- Journal Names
- Sections
- Citations
 - Templates
 - Ambiguous Citations
 - Author Lists
 - Author Name
 - Numbering
 - Sort Order
- Bibliography**
 - Templates
 - Field Substitutions
 - Layout**
 - Sort Order
 - Categories
 - Author Lists
 - Author Name
 - Editor Lists
 - Editor Name
 - Title Capitalization
- Footnotes
 - Templates
 - Field Substitutions
 - Repeated Citations
 - Author Lists
 - Author Name
 - Editor Lists
 - Editor Name
 - Title Capitalization
- Figures & Tables
 - Figures
 - Tables

Start each reference with:
Bibliography-Number. ↘



End each reference with:

شاد و پر انرژی

باشید.